



STEM in Wild Places Community Science Panel

Georgia Youth Science & Technology Centers, Inc. (GYSTC)

March 28, 2023

3:30 p.m. – 4:30 p.m.



Welcome

Panelist Introductions

Becky Griffin

**Community and School Garden Coordinator
UGA Extension**

The Great Southeast Pollinator Census



Cecilia Nachtmann

**State Coordinator
EPD/GADNR**

Georgia Adopt-A-Stream

Emily White

**Senior, McIntosh High School
Fayette County**

Coastal Work for Oyster Restoration

STEM in Wild Places

Becky Griffin, MPPPM

UGA Community & School Garden
Coordinator

Pollinator Health Associate

Georgia Certified Beekeeper

beckygri@uga.edu



GREAT SOUTHEAST



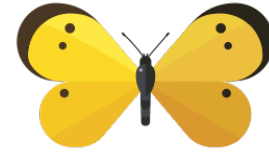
Pollinator Census



UNIVERSITY OF GEORGIA

EXTENSION

G R E A T G E O R G I A



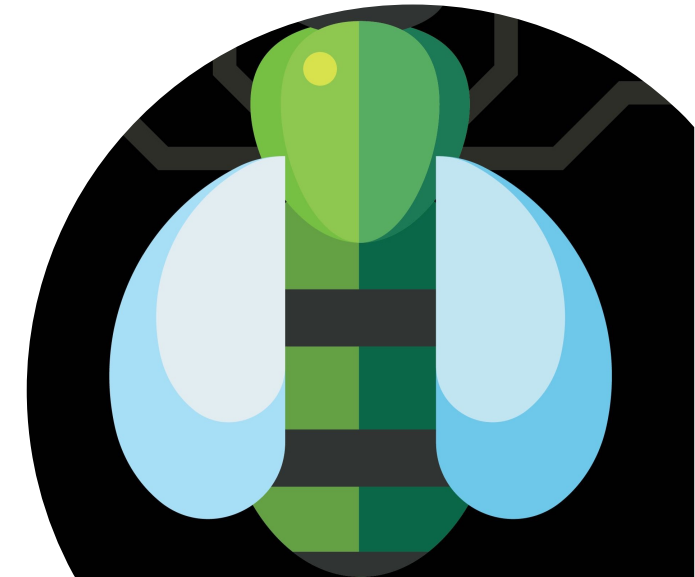
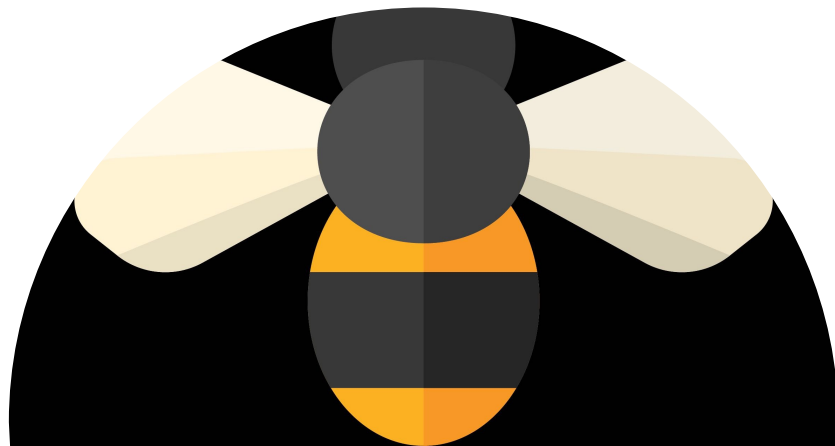
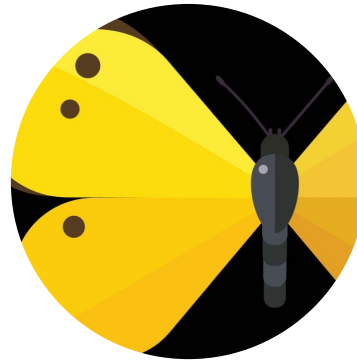
Pollinator Census

A citizen science project where Georgians count insects that land on a pollinator plant for 15 minutes, putting these insects into categories:

- Carpenter bees - *Xylocopa* spp. Latrelle (Hymenoptera: Apidae)
- Bumble bees - *Bombus* spp. Latrelle (Hymenoptera: Apidae)
- Honey bees - *Apis mellifera* L. (Hymenoptera: Apidae)
- Small bees - (Hymenoptera)
- Wasps - (Hymenoptera: Vespidae)
- Flies - (Diptera)
- Butterflies/moths - (Lepidoptera)
- Other insects

Project Goals

- To create or add sustainable pollinator habitat across Georgia.
- To increase the entomological literacy of our citizens.
- To generate useful data about our pollinator populations.





No-cost Science, Technology, Engineering, Math (STEM) Program for Schools

<https://GSePC.org>

Educators Tab

**Facebook:
Southeast Pollinator Census**

**Instagram:
@SoutheastPollinators**





Caffeine found in plants, like this yaupon holly, is a *pollinator enhancer*. It puts the pollinating insects into hyperdrive so they move pollen more quickly.

Thanks to NC State for the photo.

GREAT SOUTHEAST

Pollinator Census

#FunFactFriday



UNIVERSITY OF
GEORGIA
EXTENSION

Love
pollinators?
Bee-line over to
GSePC.org

This poster features a bright yellow background with several stylized bees in flight. The text is arranged in a clear hierarchy, starting with the main message and ending with the website URL. The University of Georgia Extension logo and a green four-leaf clover icon are positioned in the upper right corner.



Let's do some
MOTH
MATH
GSePC.org

UNIVERSITY OF
GEORGIA
EXTENSION

This poster has a purple background with a large, stylized moth illustration at the bottom right. The text is split into two lines, with 'MOTH' in purple and 'MATH' in white. The website URL is in yellow. The University of Georgia Extension logo and a white four-leaf clover icon are in the bottom right corner.

Four Years of the Great Georgia Pollinator Census

	2019	2020	2021	2022
Carpenter Bees	11,066	4,435	2,282	15,270
Bumble Bees	13,517	8,989	23,250	21,182
Honey Bees	7,979	5,009	8,818	12,410
Small Bees	20,039	10,382	14,391	17,538
Wasps	15,151	8,001	10,828	10,964
Flies	14,555	11,588	12,115	14,537
Butterflies/Moths	29,692	18,564	16,502	22,847
Other Insects	19,845	14,127	17,557	24,754
TOTAL INSECTS	131,844	81,095	111,743	139,502
TOTAL COUNTERS	4,698	3,746	5,941	8,671
# Schools	136	69	75	72
# Ga Counties	134	125	116	120 (+17 in SC)
# Pollinator Gardens	897	525	436	309 (+5 in SC)

Georgia Adopt-A-Stream

Introduction



Cecilia Nachtmann

March 28th, 2023

What is Georgia Adopt-A-Stream?

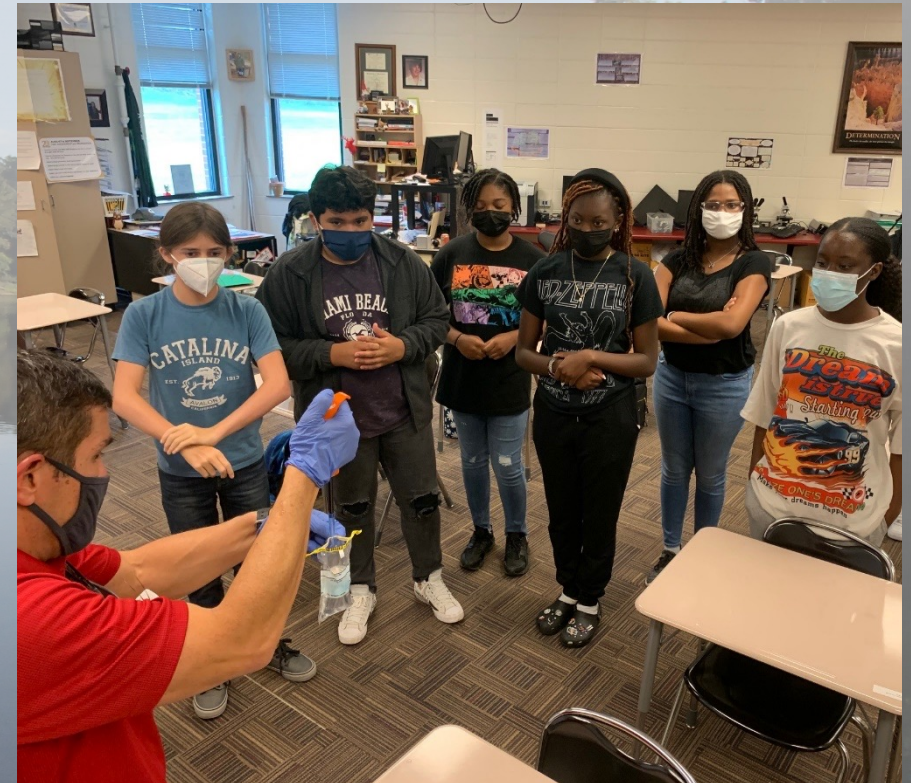


Incorporating AAS in Your Classroom

- Certification and Data Collection
- Data Access and Analysis

Certification

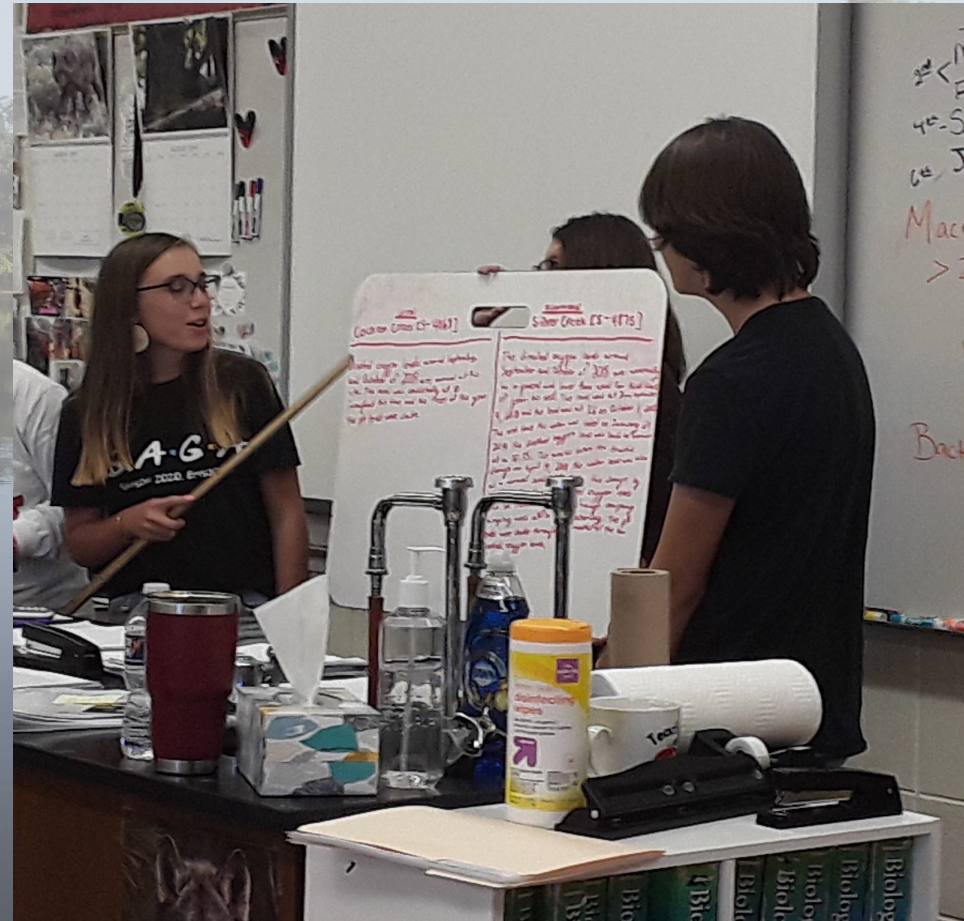
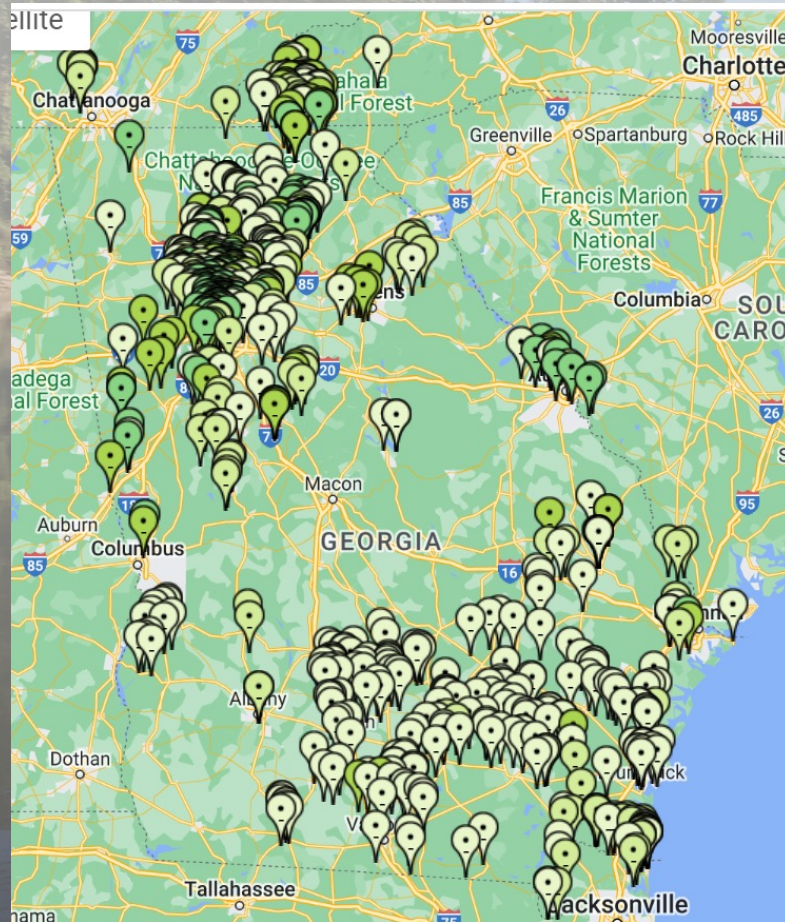
- QA/QC Monitoring
 - Chemical, Bacterial, & Macroinvertebrate
 - Workshops
 - Field protocol
 - Certification test
 - Annual recertification
- Non-QA/QC Monitoring
 - Visual Stream Survey and Watershed
 - More observational data collection



Form a Group and Adopt a Site!



Data Access and Analysis




Other EPD Outreach Programs

- **Rivers Alive-** Georgia's statewide annual volunteer waterway cleanup program
- **Project WET** (Water Education Today)- Curriculum designed for formal and non-formal educators of K-12 students to promote stewardship of water resources
- **River of Words-** Annual youth poetry and art contest that inspires children to translate observations of their watersheds into creative expression





Follow AAS and Stay Connected!


 aas@dnr.ga.gov

 AdoptAStream.Georgia.gov

 facebook.com/georgiaadoptastream

 @georgiaadoptastream

 2 Martin Luther King Jr. Drive
Suite 1452, East Tower
Atlanta, Georgia 30334

 470.938.334 |
470.524.579 |



Harold Harbert,
Watershed Outreach Manager



Cecilia Nachtmann,
AAS State Coordinator

Emily White
The K-12 Journey



Help for the Humble Oyster





Questions? Let's Stay in Touch!



gystc.org



[@gystc](https://www.facebook.com/gystc)



[@gystc](https://www.twitter.com/gystc)

Amanda Buice

Executive Director

Georgia Youth Science & Technology Centers, Inc.
Headquartered at Kennesaw State University

3333 Busbee Drive NW
Suite 325, MD #3305
Kennesaw, GA 30144

O: 470-578-3694

C: 404-725-8365

E: abuice6@Kennesaw.edu