

# CONNECTIONS TO SCIENCE GUIDES

GEORGIA YOUTH SCIENCE & TECHNOLOGY CENTERS, INC.

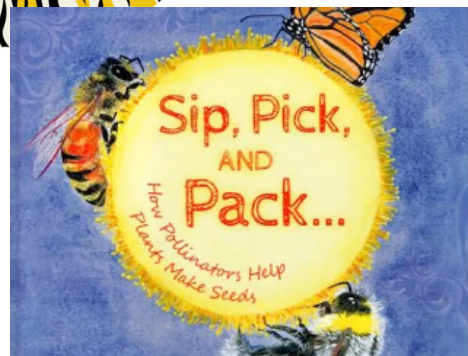
## SIP, PICK, AND PACK: HOW POLLINATORS HELP PLANTS MAKE SEEDS

BY: POLLY W. CHENEY

CAN'T FIND THE BOOK?  
READ-ALOUDS ARE AVAILABLE  
ON YOUTUBE.

### ASK

- What is a pollinator?
- What is pollination?
- What is a pollinator's role in pollination?
- Have you ever thought about being an entomologist?



### EXPLORE

#### BE A POLLINATOR

##### Materials:

- Two coffee filters or cupcake liners
- Coffee grounds (dry)
- Toilet paper tube
- Three pipe cleaners
- Sugar
- Paper
- Scissors
- Tape

##### Directions:

- To make a butterfly, wrap a pipe cleaner around a toilet paper tube and twist it underneath a few times to secure. Repeat two more times to create six legs.
- Next, fold a piece of paper in half. While the paper is still folded, cut out a wing shape. Unfold and tape onto the top of the toilet paper tube.
- To make flowers, open two coffee filters or cupcake liners. Put coffee grounds in one and sugar in the other.
- To model pollination, fly your butterfly to the first flower and set it down in it. Then, fly the butterfly to the second flower and set it down in it. Repeat a few times. What do you notice?
- As you are experimenting, think about:
  - What would happen to plants if there were no pollinators?

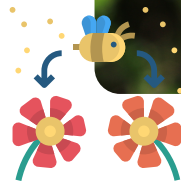
##### Fun Facts:

- In the United States, the Monarch Butterfly travels 3,000 miles every year.
- Pollinators are counted in the Great Southeast Pollinator Census. Residents in Georgia, South Carolina, and North Carolina can participate every year in August.



## EXPLAIN POLLINATION

Pollination is the act of transferring pollen grains from the male anther of a flower to the female stigma of another. Most plants rely on receiving pollen from another plant of the same species. Pollinators like bees and butterflies, pick up the pollen while looking for their own food and carry it from one plant to plant.



## EXTEND ROSALYNN CARTER BUTTERFLY TRAIL



The Rosalynn Carter Butterfly Trail is a public garden in Plains, Georgia. Designed to increase habitat for the Monarch Butterfly, it began in Mrs. Carter's garden and spread through the town, and is now an international program.

## STEM CAREER ENTOMOLOGIST

An entomologist studies insects and arthropods. At work, entomologists make many important contributions to scientific knowledge, such as the best ways to pollinate crops, conserve insect species, and protect crops, trees, wildlife, and livestock from pests. If you are interested in insects, being an entomologist might be for you!



## BACKGROUND

The Georgia Youth Science and Technology Centers, Inc. provides quality programs for teachers of STEM subjects that improve the teaching and learning process at the kindergarten through eighth grade levels. We present programs that change students' perceptions and inspire an appreciation for science, technology, engineering, and mathematics subjects.

## ABOUT US

### GYSTC, Inc.

[gystc@kennesaw.edu](mailto:gystc@kennesaw.edu)

470-578-7592

[www.gystc.org](http://www.gystc.org)

### Follow Us on Socials:

Facebook: @gystc

Instagram: @gystc\_inc

Twitter: @gystc

YouTube: @gystc



Scan QR code or Visit:  
[gystc.org/connection-to-science-guides-2024/](http://gystc.org/connection-to-science-guides-2024/)  
for more guides